

Figure 2.a.8 Wildland-Urban Interface and Intermix in Manhattan Creek displayed by housing density per acre. (Source: Colorado State Forest Service: Colorado Forest Atlas)

Community Access

The Manhattan Creek Community is situated along both sides of County Road (CR) 68C and a portion of CR 69. CR 68C intersects with CR74E in the north east and CR 69 in the west. CR 69 intersects with CO Highway 14 to the south (MM 91) and CR 74E to the north. CR 69 and 68C are gravel and are maintained by Larimer County. Private roads and driveways intersect with the county roads and are privately maintained. There are three roads off of CR 68C. Mountain Plover (five homes), Eastern Sun Court and Shambhala Way (access the Drala Mountain Center). The elevation of the Manhattan Creek area ranges from 7800 feet in the south to 9200 feet in the west. County Road 69 has steep, tight switch backs. It's a three-mile stretch from Highway 14 to Goodell Corner, where CR 69 and CR 68C intersect at Goodell corner, and another seven miles on CR 69 to the intersection with CR 73E and Red Feather Lakes.

Vegetation Type

The elevation in the Manhattan Creek area ranges between 7,800 and 9,200 feet. Vegetation consists mostly of ponderosa pine. Interspersed amongst the pine are other species of pine, fir, and fire-flashy Rocky Mountain juniper trees. Other trees in the area consist of blue spruce, Engelmann spruce, aspen. At this elevation there is still a fair amount of highly combustible sagebrush, chokecherry, willow, and current bushes. Tall prairie grasses reside along most of the roadways. During dry seasons of the year, this material would ignite quickly, carrying wildfire throughout the community.

Manhattan Creek

The Manhattan Creek community is defined by the natural breaks between inhabited areas. The community borders are defined as:

- East Border – east side of Ben Delatour Scout Camp
- West Border – FS Road 171 C/D
- North Border – Intersection of CR 69 and FR 171 (north)
- South Borders – 1 mile north of Hwy 14

Legal -
 Township 9 North, Range 72 West of the 6th PM Sections 18,19,30,31, and the south half of section 7
 Township 9 North, Range 73 West of the 6th PM Sections 13,14,15,16,17,18,19,20,21,22,23, 24,25,26,27,28,289,30, and the south half of section 12

FR = Forest Road

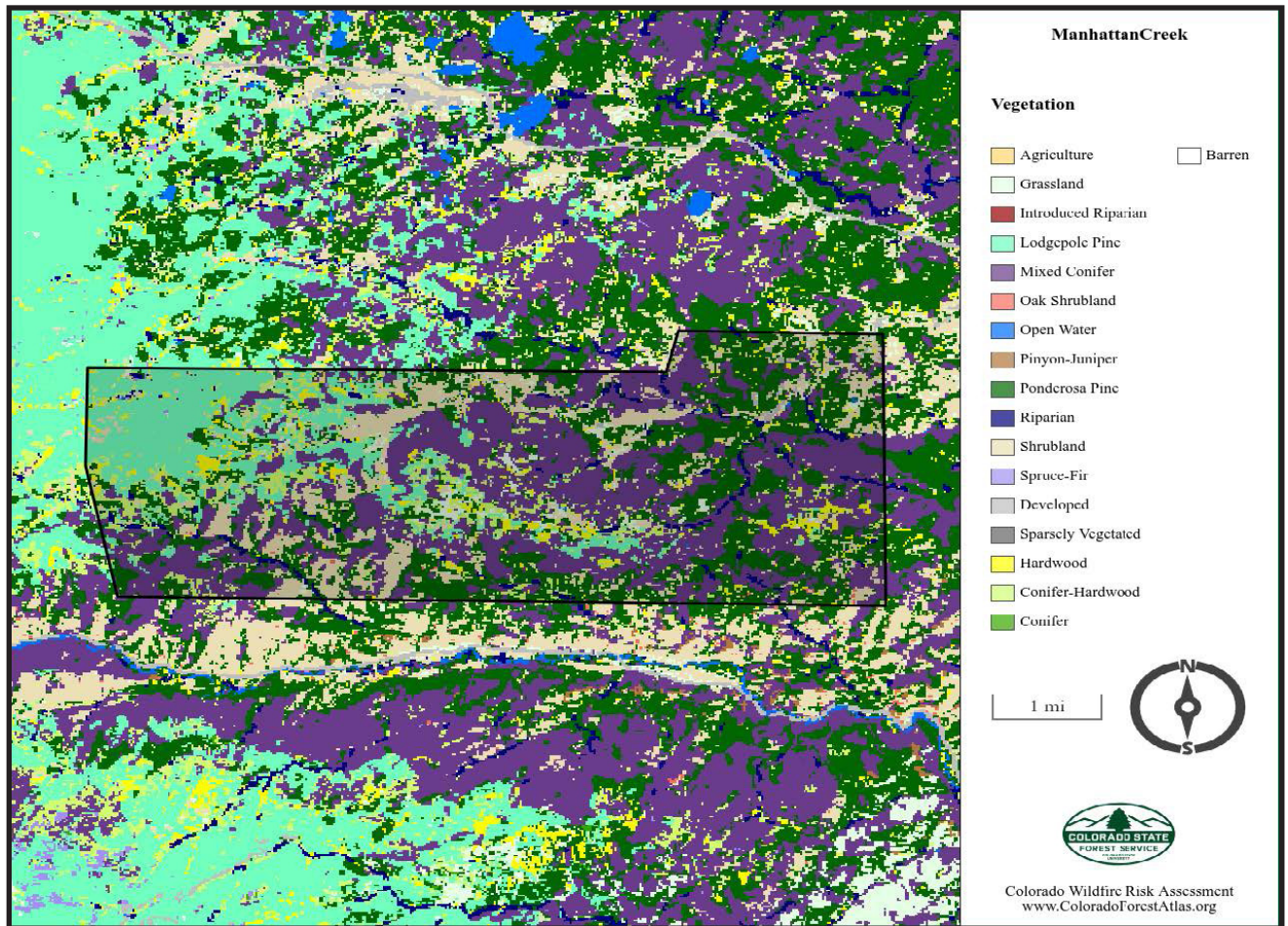


Figure 2.a.9 Vegetation in the Manhattan Creek treatment area is mixed conifer, ponderosa pine, with some lodge pole and shrubland. (Source: Colorado State Forest Service: Colorado Forest Atlas)

Businesses in the area:

- Ben Delatour Scout Ranch
- Drala Mountain Center
- Poudre Canyon Station 4
- Elkhorn Lumber
- Elkhorn Excavating
- Beck’s Automotive
- REA Manhattan Sub Station at the intersection of CR 69 and CR 68C (Goodell Corner) N 40* 44.118, W105* 34.937.

PCFPD’s Station 4 in the Manhattan Creek area.



To see the entire [Colorado Wildfire Risk Assessment for the Manhattan Creek area](#), [click here](#).

Trailheads in the area:

- Elkhorn Trailhead - hiking, horseback riding
- Forest Road 171 - jeep - 4WD
- Kelly Flats Trailhead - jeep - 4WD
- South Bald Mountain Cut-off - hiking
- Numerous non-designated campsites

Both the Ben Delatour Scout Ranch and the Drala Mountain Center have numerous structures on their property. There are 37 homes along the CR 68C.

Evacuation Routes

- CR 68C east to CR 74E
- CR 69 south to Highway 14
- CR 69 north to CR 74E